

Fields of Innovation 2021

Event

Powered by Syngenta
Vegetable Seeds

Thank you
for visiting
and enjoy your
Field Book!

The Syngenta logo features the word "syngenta" in a dark blue, lowercase sans-serif font. A small green leaf icon is positioned above the letter 'n'. A registered trademark symbol (®) is located at the end of the word.

Content of your Field Book

Annisole LS17703

Laguiole LS17701

Aurelian LS17647

Elodian LS17650

Radian

Bemole LOBA19-0034

LOBA21-0741 LOBA21-0741

Oleole LS15732

LOBU20-0031 LOBU20-0031



Powered by
Syngenta Vegetable Seeds

Batavia



Annisole LS17703

- For all of Europe (North & South)
- Very attractive colour (glossy) and nice upside presentation (ondulée leaf type)
- Uniform and flexible variety
- Semi erect plant and healthy bottom with small core => easy to harvest
- Large harvesting window

Variety	Segment	Resistances
Annisole LS17703	General	Bl:16-35EU, Nr:0 (HR)

**For more information and specific details,
please contact your local Technical Sales Representative.**

Syngenta Seeds Vegetables has exercised reasonable care and skill in compiling this brochure. All resistances quoted refer only to strains of races or pathotypes indicated on the varieties. Other pathogen races or pest biotypes capable of overcoming the resistance may exist or emerge. The Syngenta resistance against Club Root is effective against the predominant races Pb:0 and Pb:1 and against the less frequent race Pb:3 but not against the infrequent race Pb:2 that may occur in some fields. Genetic resistance is only one of the tools to manage Club Root. Culture measures such as liming, use of fertilizers with high percentage of calcium, proper drainage, good crop hygiene management are several of important components of an integrated approach to manage the disease. Syngenta Seeds Vegetables uses established analytical methods to verify specific variety resistances. However, host specificity of pests or pathogens may vary depending on environmental factors. In order to maximize the efficiency of a resistance, it is highly recommended to combine different ways of control such as growing conditions, plant protection products and genetic resistance as part of an integrated crop management. All data in this brochure are intended for general guidance only and the user should apply it in accordance with his own knowledge and experience of local conditions. In case of doubt we recommend that a small scale trial production be carried out to determine how local conditions may affect the variety.

Syngenta Seeds Vegetables cannot accept any liability in connection with this brochure.

syngentavegetables.com



#fieldsofinnovation

syngenta®

Batavia



Laguiole LS17701

- For fresh market (outdoor), North West Europe (summer), South East Europe (late spring, summer, early autumn)
- Well organized plant and very good presentation for fresh market
- Easy to harvest : semi erect plant, healthy bottom and small core
- Very uniform variety

Variety	Segment	Resistances
Laguiole LS17701	General	Bl:16-35EU, Nr:0 (HR) - LMV:1(IR)

**For more information and specific details,
please contact your local Technical Sales Representative.**

Syngenta Seeds Vegetables has exercised reasonable care and skill in compiling this brochure. All resistances quoted refer only to strains of races or pathotypes indicated on the varieties. Other pathogen races or pest biotypes capable of overcoming the resistance may exist or emerge. The Syngenta resistance against Club Root is effective against the predominant races Pb:0 and Pb:1 and against the less frequent race Pb:3 but not against the infrequent race Pb:2 that may occur in some fields. Genetic resistance is only one of the tools to manage Club Root. Culture measures such as liming, use of fertilizers with high percentage of calcium, proper drainage, good crop hygiene management are several of important components of an integrated approach to manage the disease. Syngenta Seeds Vegetables uses established analytical methods to verify specific variety resistances. However, host specificity of pests or pathogens may vary depending on environmental factors. In order to maximize the efficiency of a resistance, it is highly recommended to combine different ways of control such as growing conditions, plant protection products and genetic resistance as part of an integrated crop management. All data in this brochure are intended for general guidance only and the user should apply it in accordance with his own knowledge and experience of local conditions. In case of doubt we recommend that a small scale trial production be carried out to determine how local conditions may affect the variety.

Syngenta Seeds Vegetables cannot accept any liability in connection with this brochure.

syngentavegetables.com



#fieldsofinnovation

Butterhead



Aurelian LS17647

- Very attractive green and vibrant colour for fresh market in north west Europe (spring and autumn)
- Large amount of frame leaves for full boxes and high security in production
- Very healthy plant with excellent bottom shape which make it easy to cut and offering high harvesting rate

Variety	Segment	Resistances
Aurelian LS17647	General	BI:16-35EU, Nr:0 (HR) - LMV:1 (IR)

**For more information and specific details,
please contact your local Technical Sales Representative.**

Syngenta Seeds Vegetables has exercised reasonable care and skill in compiling this brochure. All resistances quoted refer only to strains of races or pathotypes indicated on the varieties. Other pathogen races or pest biotypes capable of overcoming the resistance may exist or emerge. The Syngenta resistance against Club Root is effective against the predominant races Pb:0 and Pb:1 and against the less frequent race Pb:3 but not against the infrequent race Pb:2 that may occur in some fields. Genetic resistance is only one of the tools to manage Club Root. Culture measures such as liming, use of fertilizers with high percentage of calcium, proper drainage, good crop hygiene management are several of important components of an integrated approach to manage the disease. Syngenta Seeds Vegetables uses established analytical methods to verify specific variety resistances. However, host specificity of pests or pathogens may vary depending on environmental factors. In order to maximize the efficiency of a resistance, it is highly recommended to combine different ways of control such as growing conditions, plant protection products and genetic resistance as part of an integrated crop management. All data in this brochure are intended for general guidance only and the user should apply it in accordance with his own knowledge and experience of local conditions. In case of doubt we recommend that a small scale trial production be carried out to determine how local conditions may affect the variety.

Syngenta Seeds Vegetables cannot accept any liability in connection with this brochure.

syngentavegetables.com



#fieldsofinnovation

Butterhead



Elodian

- Full mildew and Nr:0 resistances
- Very flexible variety for almost all season (outdoor - North west of EU)
- Smaller to medium size for fresh market, perfect for single packs
- Good amount of frame leaves + easy to cut & clean

Variety	Segment	Resistances
Elodian	Fresh / 4GI	BI:16-37EU, Nr:0, TBSV (HR) - LMV:1(IR)

**For more information and specific details,
please contact your local Technical Sales Representative.**

Syngenta Seeds Vegetables has exercised reasonable care and skill in compiling this brochure. All resistances quoted refer only to strains of races or pathotypes indicated on the varieties. Other pathogen races or pest biotypes capable of overcoming the resistance may exist or emerge. The Syngenta resistance against Club Root is effective against the predominant races Pb:0 and Pb:1 and against the less frequent race Pb:3 but not against the infrequent race Pb:2 that may occur in some fields. Genetic resistance is only one of the tools to manage Club Root. Culture measures such as liming, use of fertilizers with high percentage of calcium, proper drainage, good crop hygiene management are several of important components of an integrated approach to manage the disease. Syngenta Seeds Vegetables uses established analytical methods to verify specific variety resistances. However, host specificity of pests or pathogens may vary depending on environmental factors. In order to maximize the efficiency of a resistance, it is highly recommended to combine different ways of control such as growing conditions, plant protection products and genetic resistance as part of an integrated crop management. All data in this brochure are intended for general guidance only and the user should apply it in accordance with his own knowledge and experience of local conditions. In case of doubt we recommend that a small scale trial production be carried out to determine how local conditions may affect the variety.

Syngenta Seeds Vegetables cannot accept any liability in connection with this brochure.

syngentavegetables.com



#fieldsofinnovation

Butterhead



Radian

- Full mildew package and Nr:0 resistances
- Very good upside with attractive green color and nice / healthy bottom quality
- Good behaviour against internal tipburn and bolting (real Summer variety)
- Good filling offering high white rate (for processing market) and good harvesting window

Variety	Segment	Resistances
Radian	Fresh	Bl:16-37EU, Nr:0, TBSV (HR) - LMV:1(IR)

**For more information and specific details,
please contact your local Technical Sales Representative.**

Syngenta Seeds Vegetables has exercised reasonable care and skill in compiling this brochure. All resistances quoted refer only to strains of races or pathotypes indicated on the varieties. Other pathogen races or pest biotypes capable of overcoming the resistance may exist or emerge. The Syngenta resistance against Club Root is effective against the predominant races Pb:0 and Pb:1 and against the less frequent race Pb:3 but not against the infrequent race Pb:2 that may occur in some fields. Genetic resistance is only one of the tools to manage Club Root. Culture measures such as liming, use of fertilizers with high percentage of calcium, proper drainage, good crop hygiene management are several of important components of an integrated approach to manage the disease. Syngenta Seeds Vegetables uses established analytical methods to verify specific variety resistances. However, host specificity of pests or pathogens may vary depending on environmental factors. In order to maximize the efficiency of a resistance, it is highly recommended to combine different ways of control such as growing conditions, plant protection products and genetic resistance as part of an integrated crop management. All data in this brochure are intended for general guidance only and the user should apply it in accordance with his own knowledge and experience of local conditions. In case of doubt we recommend that a small scale trial production be carried out to determine how local conditions may affect the variety.

Syngenta Seeds Vegetables cannot accept any liability in connection with this brochure.

syngentavegetables.com



#fieldsofinnovation

Powered by
Syngenta Vegetable Seeds

Batavia

Variety picture
coming soon!

Bemole LOBA19-0034

- Our new green batavia variety for Fall & Spring period
- Variety offering a very nice upside presentation (frise type), good volume & finally good bottom quality
- Under promotion during 2021 season
- Full breimia package (BI:16-37EU - HR)

Variety	Segment	Resistances
Bemole LOBA19-0034		BI:16-37EU, Nr:0 (HR) - LMV:1 (IR)

**For more information and specific details,
please contact your local Technical Sales Representative.**

Syngenta Seeds Vegetables has exercised reasonable care and skill in compiling this brochure. All resistances quoted refer only to strains of races or pathotypes indicated on the varieties. Other pathogen races or pest biotypes capable of overcoming the resistance may exist or emerge. The Syngenta resistance against Club Root is effective against the predominant races Pb:0 and Pb:1 and against the less frequent race Pb:3 but not against the infrequent race Pb:2 that may occur in some fields. Genetic resistance is only one of the tools to manage Club Root. Culture measures such as liming, use of fertilizers with high percentage of calcium, proper drainage, good crop hygiene management are several of important components of an integrated approach to manage the disease. Syngenta Seeds Vegetables uses established analytical methods to verify specific variety resistances. However, host specificity of pests or pathogens may vary depending on environmental factors. In order to maximize the efficiency of a resistance, it is highly recommended to combine different ways of control such as growing conditions, plant protection products and genetic resistance as part of an integrated crop management. All data in this brochure are intended for general guidance only and the user should apply it in accordance with his own knowledge and experience of local conditions. In case of doubt we recommend that a small scale trial production be carried out to determine how local conditions may affect the variety.

Syngenta Seeds Vegetables cannot accept any liability in connection with this brochure.

syngentavegetables.com



#fieldsofinnovation

syngenta[®]

Powered by
Syngenta Vegetable Seeds

Batavia

Variety picture
coming soon!

LOBA21-0741

- Our new green batavia for late Spring, Summer & Fall season with large transplanting window
- 2021 field performance really good offering a very nice upside presentation (ondulé type), very nice & fresh color, good bolting & tipburn behaviour & finally good harvesting window
- To be tested in promotion trials during 2022 season
- Full breimia package (BI:16-37EU - HR)

Variety	Segment	Resistances
LOBA21-0741		BI:16-37EU, Nr:0 (HR) - LMV:1 (IR)

**For more information and specific details,
please contact your local Technical Sales Representative.**

Syngenta Seeds Vegetables has exercised reasonable care and skill in compiling this brochure. All resistances quoted refer only to strains of races or pathotypes indicated on the varieties. Other pathogen races or pest biotypes capable of overcoming the resistance may exist or emerge. The Syngenta resistance against Club Root is effective against the predominant races Pb:0 and Pb:1 and against the less frequent race Pb:3 but not against the infrequent race Pb:2 that may occur in some fields. Genetic resistance is only one of the tools to manage Club Root. Culture measures such as liming, use of fertilizers with high percentage of calcium, proper drainage, good crop hygiene management are several of important components of an integrated approach to manage the disease. Syngenta Seeds Vegetables uses established analytical methods to verify specific variety resistances. However, host specificity of pests or pathogens may vary depending on environmental factors. In order to maximize the efficiency of a resistance, it is highly recommended to combine different ways of control such as growing conditions, plant protection products and genetic resistance as part of an integrated crop management. All data in this brochure are intended for general guidance only and the user should apply it in accordance with his own knowledge and experience of local conditions. In case of doubt we recommend that a small scale trial production be carried out to determine how local conditions may affect the variety.

Syngenta Seeds Vegetables cannot accept any liability in connection with this brochure.

syngentavegetables.com



#fieldsofinnovation

syngenta[®]

Powered by
Syngenta Vegetable Seeds

Batavia



Oleole LS15732

- Good volume & vigour for Spring and Autumn period
- Good uniformity and good upside presentation
- Semi erect plant, so easy to cut

Variety	Segment	Resistances
Oleole LS15732		BI:16-35, 37EU, Nr:0 (HR) - LMV:1(IR)

**For more information and specific details,
please contact your local Technical Sales Representative.**

Syngenta Seeds Vegetables has exercised reasonable care and skill in compiling this brochure. All resistances quoted refer only to strains of races or pathotypes indicated on the varieties. Other pathogen races or pest biotypes capable of overcoming the resistance may exist or emerge. The Syngenta resistance against Club Root is effective against the predominant races Pb:0 and Pb:1 and against the less frequent race Pb:3 but not against the infrequent race Pb:2 that may occur in some fields. Genetic resistance is only one of the tools to manage Club Root. Culture measures such as liming, use of fertilizers with high percentage of calcium, proper drainage, good crop hygiene management are several of important components of an integrated approach to manage the disease. Syngenta Seeds Vegetables uses established analytical methods to verify specific variety resistances. However, host specificity of pests or pathogens may vary depending on environmental factors. In order to maximize the efficiency of a resistance, it is highly recommended to combine different ways of control such as growing conditions, plant protection products and genetic resistance as part of an integrated crop management. All data in this brochure are intended for general guidance only and the user should apply it in accordance with his own knowledge and experience of local conditions. In case of doubt we recommend that a small scale trial production be carried out to determine how local conditions may affect the variety.

Syngenta Seeds Vegetables cannot accept any liability in connection with this brochure.

syngentavegetables.com



#fieldsofinnovation

syngenta[®]

Butterhead

Variety picture
coming soon!

LOBU20-0031

- Our new Spring & Fall variety with full mildew and Nr:0 resistances
- Very nice & attractive green colour & good upside presentation (outer leaves)
- Good bottom quality (close & healthy bottom) : easy to cut
- Good variety to promote during 2022 for fresh market

Variety	Segment	Resistances
LOBU20-0031	Fresh	BI:16-37EU, Nr:0 (HR) - LMV:1 (IR)

**For more information and specific details,
please contact your local Technical Sales Representative.**

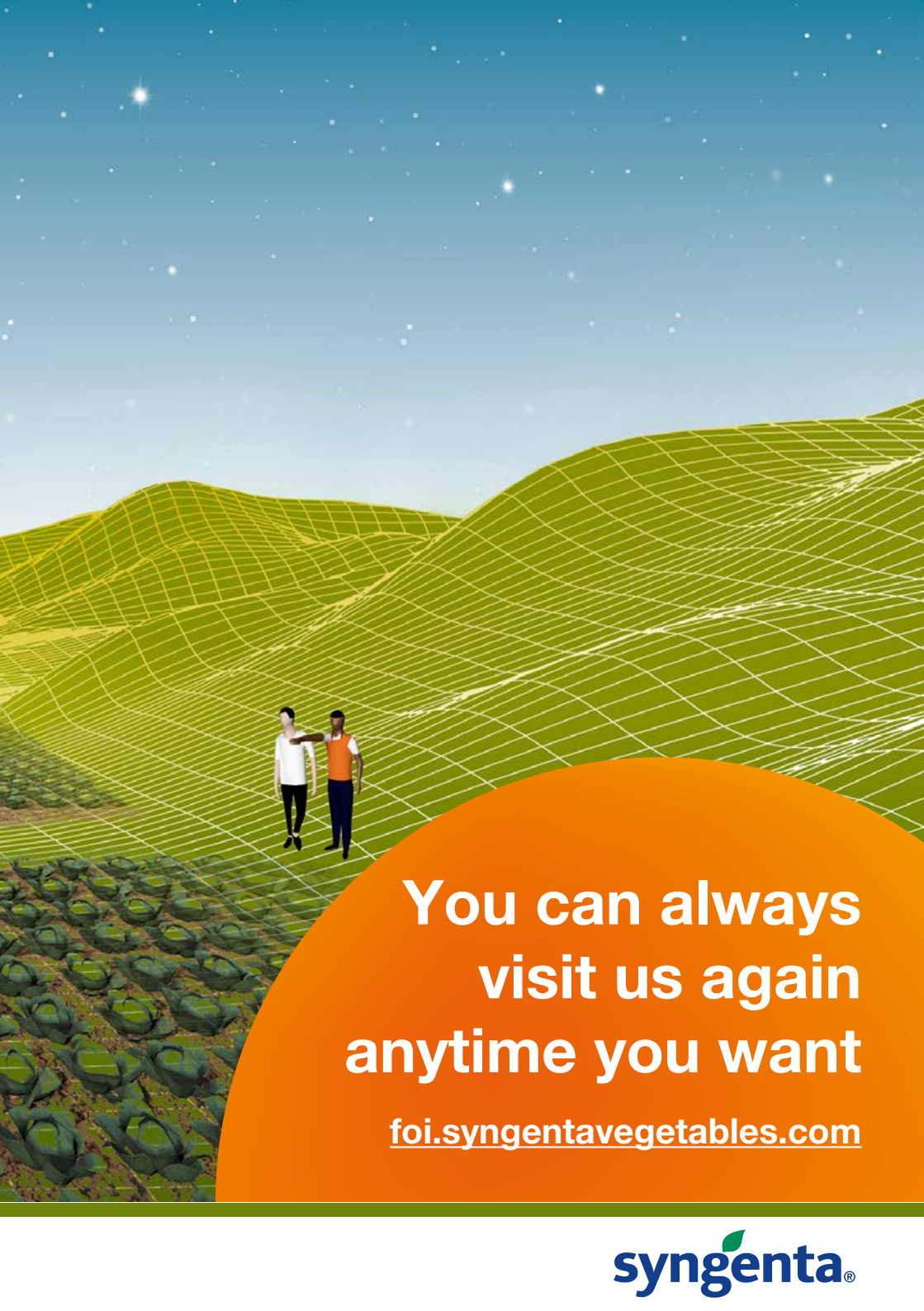
Syngenta Seeds Vegetables has exercised reasonable care and skill in compiling this brochure. All resistances quoted refer only to strains of races or pathotypes indicated on the varieties. Other pathogen races or pest biotypes capable of overcoming the resistance may exist or emerge. The Syngenta resistance against Club Root is effective against the predominant races Pb:0 and Pb:1 and against the less frequent race Pb:3 but not against the infrequent race Pb:2 that may occur in some fields. Genetic resistance is only one of the tools to manage Club Root. Culture measures such as liming, use of fertilizers with high percentage of calcium, proper drainage, good crop hygiene management are several of important components of an integrated approach to manage the disease. Syngenta Seeds Vegetables uses established analytical methods to verify specific variety resistances. However, host specificity of pests or pathogens may vary depending on environmental factors. In order to maximize the efficiency of a resistance, it is highly recommended to combine different ways of control such as growing conditions, plant protection products and genetic resistance as part of an integrated crop management. All data in this brochure are intended for general guidance only and the user should apply it in accordance with his own knowledge and experience of local conditions. In case of doubt we recommend that a small scale trial production be carried out to determine how local conditions may affect the variety.

Syngenta Seeds Vegetables cannot accept any liability in connection with this brochure.

[syngentavegetables.com](https://www.syngentavegetables.com)



#fieldsofinnovation



**You can always
visit us again
anytime you want**

foi.syngentavegetables.com

syngenta®