

# Fields of Innovation

September 21 - 25, 2020

Event

Powered by Syngenta  
Vegetable Seeds

Thank you  
for visiting  
and enjoy your  
Field Book!

The Syngenta logo features the word "syngenta" in a blue, lowercase sans-serif font. A small green leaf icon is positioned above the letter "n". A registered trademark symbol (®) is located at the end of the word.

# Content of your Field Book

Strongstar

SS3006

GSS3951 GSS3951

GSS3071 GSS3071

Garrison

Accentuate



# Sweetcorn



## Strongstar

- Very early variety to start the harvesting season
- For both fresh and processing markets
- Good Tip fill, deep kernels
- Good plant balance, excellent taste
- Maturity 72 days

| Variety    | Segment     | Resistances                                |
|------------|-------------|--|
| Strongstar | Super Sweet | Et (IR), Bm (IR), Ps Rp1-g (HR), MDMV (HR) |

**For more information and specific details,  
please contact your local Technical Sales Representative.**

Syngenta Seeds Vegetables has exercised reasonable care and skill in compiling this brochure. All resistances quoted refer only to strains of races or pathotypes indicated on the varieties. Other pathogen races or pest biotypes capable of overcoming the resistance may exist or emerge. The Syngenta resistance against Club Root is effective against the predominant races Pb:0 and Pb:1 and against the less frequent race Pb:3 but not against the infrequent race Pb:2 that may occur in some fields. Genetic resistance is only one of the tools to manage Club Root. Culture measures such as liming, use of fertilizers with high percentage of calcium, proper drainage, good crop hygiene management are several of important components of an integrated approach to manage the disease. Syngenta Seeds Vegetables uses established analytical methods to verify specific variety resistances. However, host specificity of pests or pathogens may vary depending on environmental factors. In order to maximize the efficiency of a resistance, it is highly recommended to combine different ways of control such as growing conditions, plant protection products and genetic resistance as part of an integrated crop management. All data in this brochure are intended for general guidance only and the user should apply it in accordance with his own knowledge and experience of local conditions. In case of doubt we recommend that a small scale trial production be carried out to determine how local conditions may affect the variety.

Syngenta Seeds Vegetables cannot accept any liability in connection with this brochure.

[syngentavegetables.com](http://syngentavegetables.com)



#fieldsofinnovation

# Sweetcorn



## SS3006

- Fresh market variety, very uniform
- Incredible eating quality
- Excellent tip fill
- Long field holding ability
- Excellent early seedling vigour, maturity 79 days

| Variety | Segment     | Resistances                            |
|---------|-------------|--|
| SS3006  | Super Sweet | Good field tolerance to NCLB and Rust. |

**For more information and specific details,  
please contact your local Technical Sales Representative.**

Syngenta Seeds Vegetables has exercised reasonable care and skill in compiling this brochure. All resistances quoted refer only to strains of races or pathotypes indicated on the varieties. Other pathogen races or pest biotypes capable of overcoming the resistance may exist or emerge. The Syngenta resistance against Club Root is effective against the predominant races Pb:0 and Pb:1 and against the less frequent race Pb:3 but not against the infrequent race Pb:2 that may occur in some fields. Genetic resistance is only one of the tools to manage Club Root. Culture measures such as liming, use of fertilizers with high percentage of calcium, proper drainage, good crop hygiene management are several of important components of an integrated approach to manage the disease. Syngenta Seeds Vegetables uses established analytical methods to verify specific variety resistances. However, host specificity of pests or pathogens may vary depending on environmental factors. In order to maximize the efficiency of a resistance, it is highly recommended to combine different ways of control such as growing conditions, plant protection products and genetic resistance as part of an integrated crop management. All data in this brochure are intended for general guidance only and the user should apply it in accordance with his own knowledge and experience of local conditions. In case of doubt we recommend that a small scale trial production be carried out to determine how local conditions may affect the variety.

Syngenta Seeds Vegetables cannot accept any liability in connection with this brochure.

[syngentavegetables.com](http://syngentavegetables.com)



#fieldsofinnovation

# Sweetcorn



## GSS3951

- Mid late super sweet yellow.
- Reference in the processing market at global level
- Due to the ear size and very nice presentation it fits very well with the fresh market demand
- Very strong disease package
- Large harvesting window and very good taste, maturity 81 days

| Variety | Segment     | Resistances   |
|---------|-------------|---|
| GSS3951 | Super Sweet | Et (IR), Bm (IR), Ps Rp1-d (HR), Ps Rp1-l (HR), MDMV (IR) |

**For more information and specific details,  
please contact your local Technical Sales Representative.**

Syngenta Seeds Vegetables has exercised reasonable care and skill in compiling this brochure. All resistances quoted refer only to strains of races or pathotypes indicated on the varieties. Other pathogen races or pest biotypes capable of overcoming the resistance may exist or emerge. The Syngenta resistance against Club Root is effective against the predominant races Pb:0 and Pb:1 and against the less frequent race Pb:3 but not against the infrequent race Pb:2 that may occur in some fields. Genetic resistance is only one of the tools to manage Club Root. Culture measures such as liming, use of fertilizers with high percentage of calcium, proper drainage, good crop hygiene management are several of important components of an integrated approach to manage the disease. Syngenta Seeds Vegetables uses established analytical methods to verify specific variety resistances. However, host specificity of pests or pathogens may vary depending on environmental factors. In order to maximize the efficiency of a resistance, it is highly recommended to combine different ways of control such as growing conditions, plant protection products and genetic resistance as part of an integrated crop management. All data in this brochure are intended for general guidance only and the user should apply it in accordance with his own knowledge and experience of local conditions. In case of doubt we recommend that a small scale trial production be carried out to determine how local conditions may affect the variety.

Syngenta Seeds Vegetables cannot accept any liability in connection with this brochure.

[syngentavegetables.com](http://syngentavegetables.com)



#fieldsofinnovation

# Sweetcorn



## GSS3071

- Second early yellow supersweet processing and fresh variety
- Medium long ear and strong disease resistant package, maturity 79 days

| Variety         | Segment     | Resistances   |
|-----------------|-------------|---|
| GSS3071 GSS3071 | Super Sweet | Pst (HR), Et (IR), Bm (HR), Ps Rp1-d (HR), Ps Rp1-l (HR), MDMV (HR) |

**For more information and specific details,  
please contact your local Technical Sales Representative.**

Syngenta Seeds Vegetables has exercised reasonable care and skill in compiling this brochure. All resistances quoted refer only to strains of races or pathotypes indicated on the varieties. Other pathogen races or pest biotypes capable of overcoming the resistance may exist or emerge. The Syngenta resistance against Club Root is effective against the predominant races Pb:0 and Pb:1 and against the less frequent race Pb:3 but not against the infrequent race Pb:2 that may occur in some fields. Genetic resistance is only one of the tools to manage Club Root. Culture measures such as liming, use of fertilizers with high percentage of calcium, proper drainage, good crop hygiene management are several of important components of an integrated approach to manage the disease. Syngenta Seeds Vegetables uses established analytical methods to verify specific variety resistances. However, host specificity of pests or pathogens may vary depending on environmental factors. In order to maximize the efficiency of a resistance, it is highly recommended to combine different ways of control such as growing conditions, plant protection products and genetic resistance as part of an integrated crop management. All data in this brochure are intended for general guidance only and the user should apply it in accordance with his own knowledge and experience of local conditions. In case of doubt we recommend that a small scale trial production be carried out to determine how local conditions may affect the variety.

Syngenta Seeds Vegetables cannot accept any liability in connection with this brochure.

[syngentavegetables.com](http://syngentavegetables.com)



#fieldsofinnovation

# Sweetcorn



## Garrison

- Very uniform ears with excellent tip fill, good husk coverage
- Very homogenous kernel color
- Ability to produce 2 cobs per plant at a lower density, maturity 79 days

| Variety  | Segment     | Resistances                                |
|----------|-------------|--|
| Garrison | Super Sweet | HR : Pst, Et, Bm, Ps Rp1-d, Ps Rp1-l, MDMV |

**For more information and specific details,  
please contact your local Technical Sales Representative.**

Syngenta Seeds Vegetables has exercised reasonable care and skill in compiling this brochure. All resistances quoted refer only to strains of races or pathotypes indicated on the varieties. Other pathogen races or pest biotypes capable of overcoming the resistance may exist or emerge. The Syngenta resistance against Club Root is effective against the predominant races Pb:0 and Pb:1 and against the less frequent race Pb:3 but not against the infrequent race Pb:2 that may occur in some fields. Genetic resistance is only one of the tools to manage Club Root. Culture measures such as liming, use of fertilizers with high percentage of calcium, proper drainage, good crop hygiene management are several of important components of an integrated approach to manage the disease. Syngenta Seeds Vegetables uses established analytical methods to verify specific variety resistances. However, host specificity of pests or pathogens may vary depending on environmental factors. In order to maximize the efficiency of a resistance, it is highly recommended to combine different ways of control such as growing conditions, plant protection products and genetic resistance as part of an integrated crop management. All data in this brochure are intended for general guidance only and the user should apply it in accordance with his own knowledge and experience of local conditions. In case of doubt we recommend that a small scale trial production be carried out to determine how local conditions may affect the variety.

Syngenta Seeds Vegetables cannot accept any liability in connection with this brochure.

[syngentavegetables.com](http://syngentavegetables.com)



#fieldsofinnovation

# Sweetcorn



## Accentuate

- Widely adapted variety with high yield potential
- Good tip fill and straight rows
- Great husk package
- Resistant to lodging, maturity 81 days

| Variety    | Segment     | Resistances                |
|------------|-------------|----------------------------|
| Accentuate | Super Sweet | HR : Bm, Et, Ps Rp1-g, Pst |

**For more information and specific details,  
please contact your local Technical Sales Representative.**

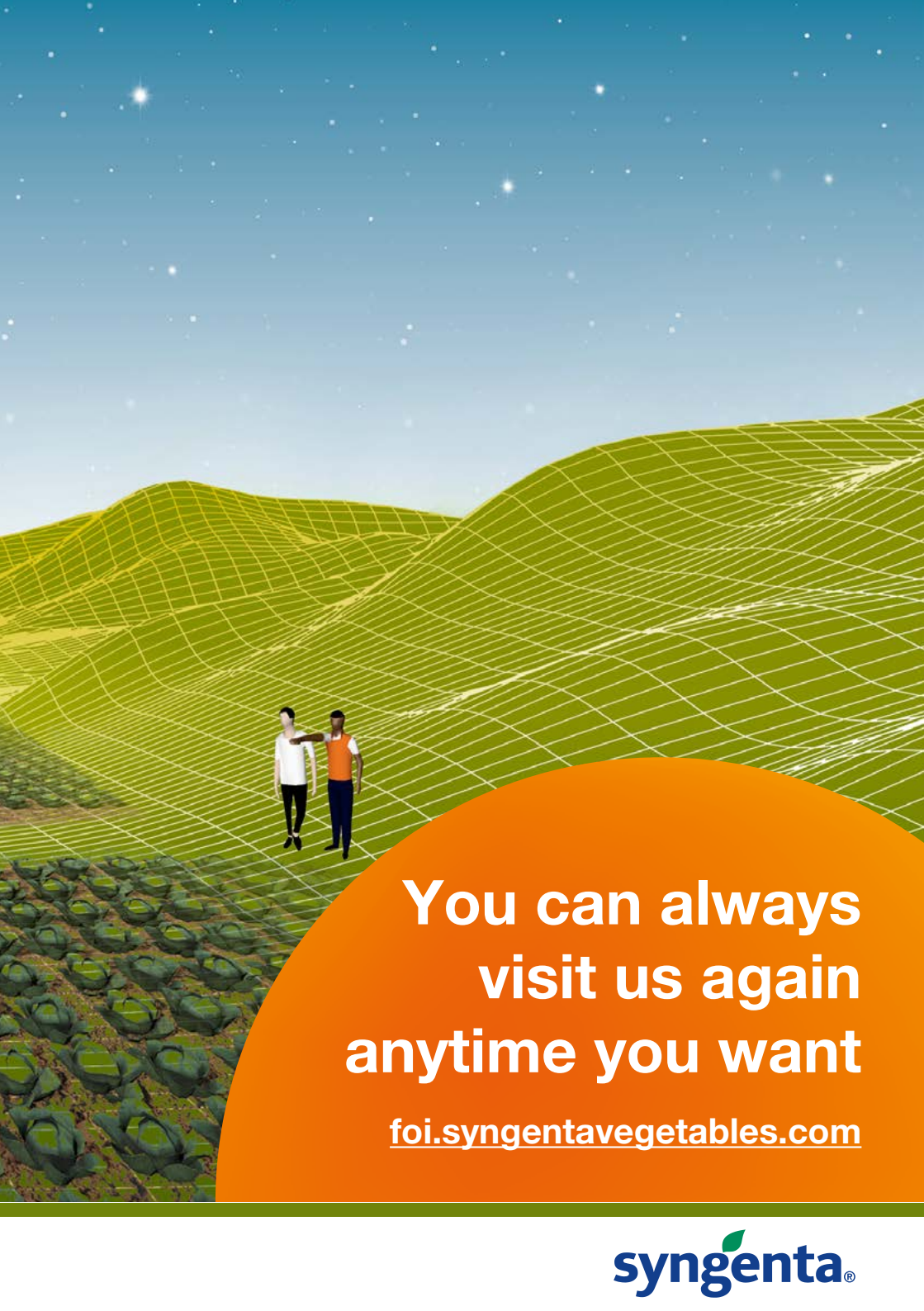
Syngenta Seeds Vegetables has exercised reasonable care and skill in compiling this brochure. All resistances quoted refer only to strains of races or pathotypes indicated on the varieties. Other pathogen races or pest biotypes capable of overcoming the resistance may exist or emerge. The Syngenta resistance against Club Root is effective against the predominant races Pb:0 and Pb:1 and against the less frequent race Pb:3 but not against the infrequent race Pb:2 that may occur in some fields. Genetic resistance is only one of the tools to manage Club Root. Culture measures such as liming, use of fertilizers with high percentage of calcium, proper drainage, good crop hygiene management are several of important components of an integrated approach to manage the disease. Syngenta Seeds Vegetables uses established analytical methods to verify specific variety resistances. However, host specificity of pests or pathogens may vary depending on environmental factors. In order to maximize the efficiency of a resistance, it is highly recommended to combine different ways of control such as growing conditions, plant protection products and genetic resistance as part of an integrated crop management. All data in this brochure are intended for general guidance only and the user should apply it in accordance with his own knowledge and experience of local conditions. In case of doubt we recommend that a small scale trial production be carried out to determine how local conditions may affect the variety.

Syngenta Seeds Vegetables cannot accept any liability in connection with this brochure.

[syngentavegetables.com](http://syngentavegetables.com)



#fieldsofinnovation



**You can always  
visit us again  
anytime you want**

**[foi.syngentavegetables.com](http://foi.syngentavegetables.com)**

**syngenta®**